

ET2321C

UNIVERSAL CV JOINT PULLER

PAT.M555275



- Special tool for safe, quick, labour saving removal of the CV joint for most car models. (With this tool, there is no need to waste time and labour on hammering the CV joint for removal.)
- Smaller size with higher rigidity than the others in the market which allows using this tool in a narrower space.
- Single-side design allows the installation of clamp more easily, and directly.
- A washer is included for using with the original CV joint nut.
- Instead of original CV joint nut, there are 4 types of optional nut for better operation.
- Suitable for both conventional and new-type CV joint removal.

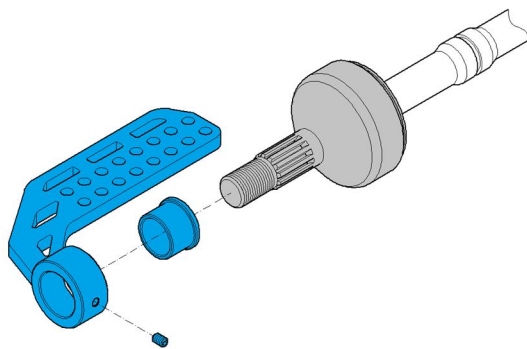
Specification:

No.	Description	Dimensions	Q'ty	Remark
1	Main Body	60X253X151.5	1	
2	Clamp	38X19X116	1	
3	Guiding socket (Extra Long)	$\phi 45 \times \phi 27.5 \times 52L$	1	
4	Guiding socket	$\phi 45 \times \phi 16.5 \times 30L$	1	
5	Guiding socket	$\phi 45 \times \phi 27.5 \times 30L$	1	
6	Guiding socket	$\phi 45 \times \phi 32.5 \times 30L$	1	
7	Washer	$\phi 54 \times \phi 30 \times 4L$	1	
8	Hexagon Nut	M20 x P1.5	1	
9	Hexagon Nut	M22 x P1.5	1	
10	Hexagon Nut	M24 x P1.5	1	
11	Hexagon Nut	M27 x P1.5	1	

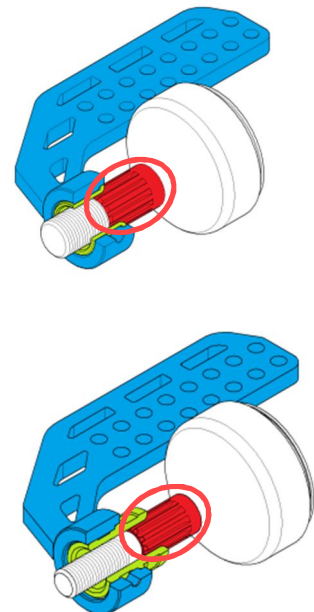
Instructions:

Removal of conventional CV joint:

- **Step 1**



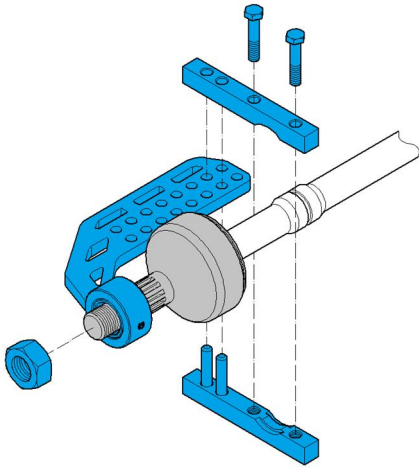
(Fig. 1)



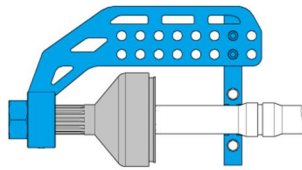
(Fig. 2)

1. Find a suitable guiding socket to fit the circled part in Fig. 2. (Guiding socket should only be slightly bigger than the circled part).
2. Put the suitable guiding socket onto main body and tighten the set screw to lock the suitable guiding socket. (Fig. 1)

● **Step 2**



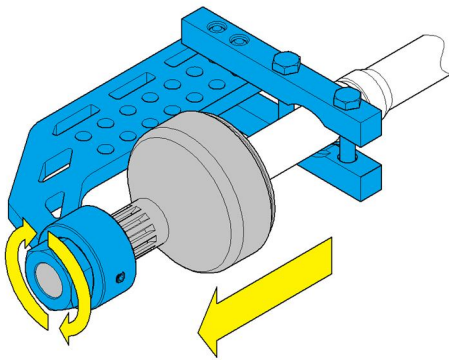
(Fig. 3)



(Fig. 4)

1. Install the main body with guiding socket as Fig. 3,
2. Install the nut (Use the washer if the original CV joint nut is used instead of optional nuts.) onto CV joint and let few threads pass the nut, but don't tighten up as Fig 4.
3. Install the clamp to the corresponding position according to the CV joint as Fig. 4.

● **Step 3**

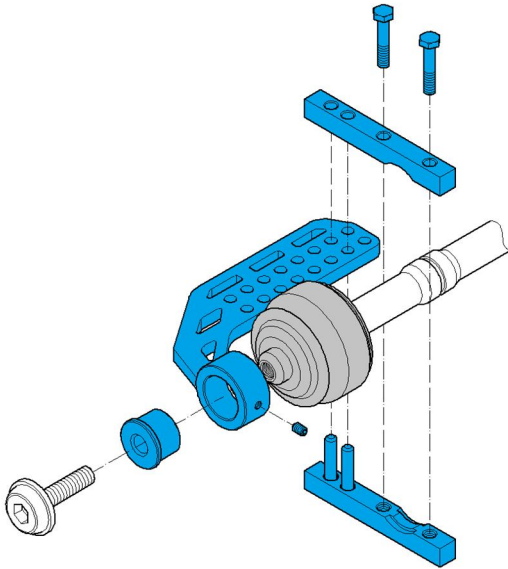


(Fig. 5)

1. After the tool is properly installed, turn the nut to pull out the CV joint. (Turn the nut until it is not tightened, the removal is completed.)

Removal of new-type CV joint:

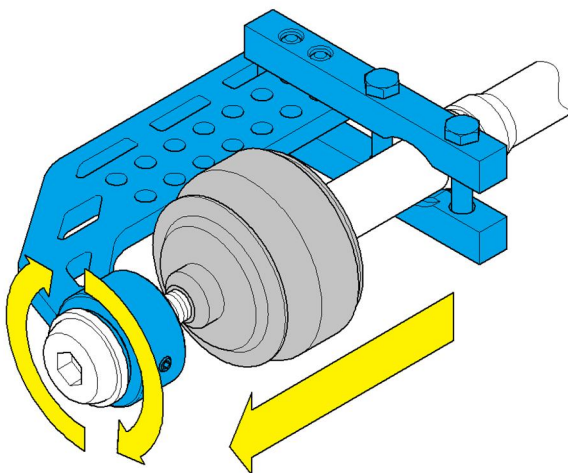
● Step 1



(Fig. 6)

1. Put guiding socket No.4 onto main body and tighten the set screw.
2. Install the original CV joint screw as Fig. 6.
3. Install the clamp to the corresponding position according to the CV joint.

● Step 2



(Fig. 7)

1. After the tool is properly installed, turn the original CV joint screw to pull out the CV joint as Fig. 7.