


Model	ET2026B
Product Photo	
Display screen	3.5-inch full-view TFT display
Infrared image resolution	256×192
Temperature measurement range	-20°C to 550°C(-4°F to 1022°F)
Measurement accuracy	-15°C to 550°C ±2 °C or ±2%; -20°C to -15°C +4 °C
Field angle	56°×42°
Focus length	3.2mm
NETD	≤50mK @25°C,@F/1.0
Frame rate of thermal images	25Hz
Focus mode	Fixed
Wavelength coverage	8-14um
Emissivity	Adjustable from 0.01 to 1.00
Color palette	Rainbow, iron, cold color, white hot, black hot
LCD resolution	640X480
Storage Image/Video Format	JPG/MP4
Storage capacity	Built-in 8G (Actually available 6.6G)
USB	Type-C USB
Power supply	Built-in chargeable 26650 battery Detachable
Working time	≥4 hours
Setting command	Unit、 language、 date、 time、 information
Language	English、 Chinese、 Italian、 German
Automatic power-off time	Selectable: 5 minutes/20 minutes/not power off automatically
Product size	255.4mm×122.1mm×97.2mm
Product weight	588g
Work temperature	0°C to 45°C
Storage temperature	-20°C to 60°C
Relative humidity	< 85%RH



# ET2026B Handheld observation thermal imager

26650 lithium battery, more powerful, infrared (256\*192) + visible light (with visible light 300,000 pixels) fusion, wifi function, 3.5-inch display, high and low temperature automatic capture.

Equipped with a quick replacement accessory bracket and lightweight for monocular rifles, it ensures accuracy after quick installation when used as a rifle mirror.



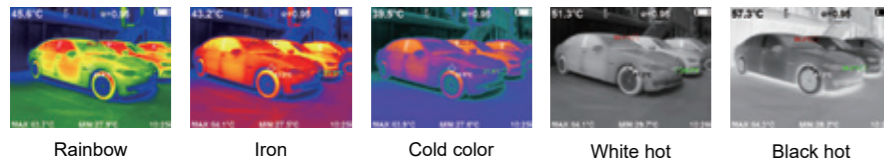
☀️ **Connect to WIFI and save synchronously**

# WIFI

Parameter Settings can be saved, images can be saved/downloaded. Search this product WiFi via mobile device and access via IP.

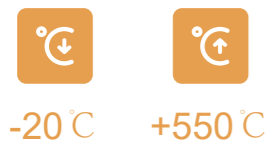


## 5 color palettes



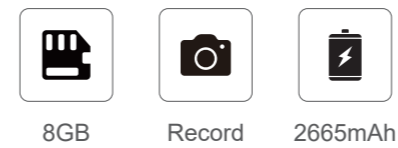
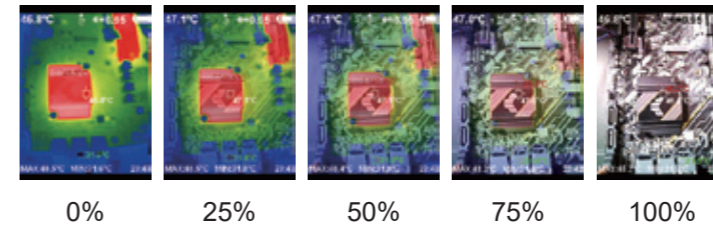
☀️ **High and low range switching**

Temperature measurement range: -20 C to +550 C, wider temperature measurement range, more application scenarios, good equipment, one is enough.



☀️ **Infrared + visible light fusion**

With visible light 300,000 pixels. Using dual-light imaging technology, combining the advantages of infrared and visible light, discovery and recognition integration, efficiency improvement.



☀️ **26650 lithium battery**

Charging with USB cable. Working time is about 4 hours. Automatic shutdown more power saving, the time can be selected: 5 minutes /20 minutes/no automatic shutdown.

☀️ **3.5" large display screen**

3.5-inch full-view TFT display, output high quality infrared images, everywhere detail can be seen.

