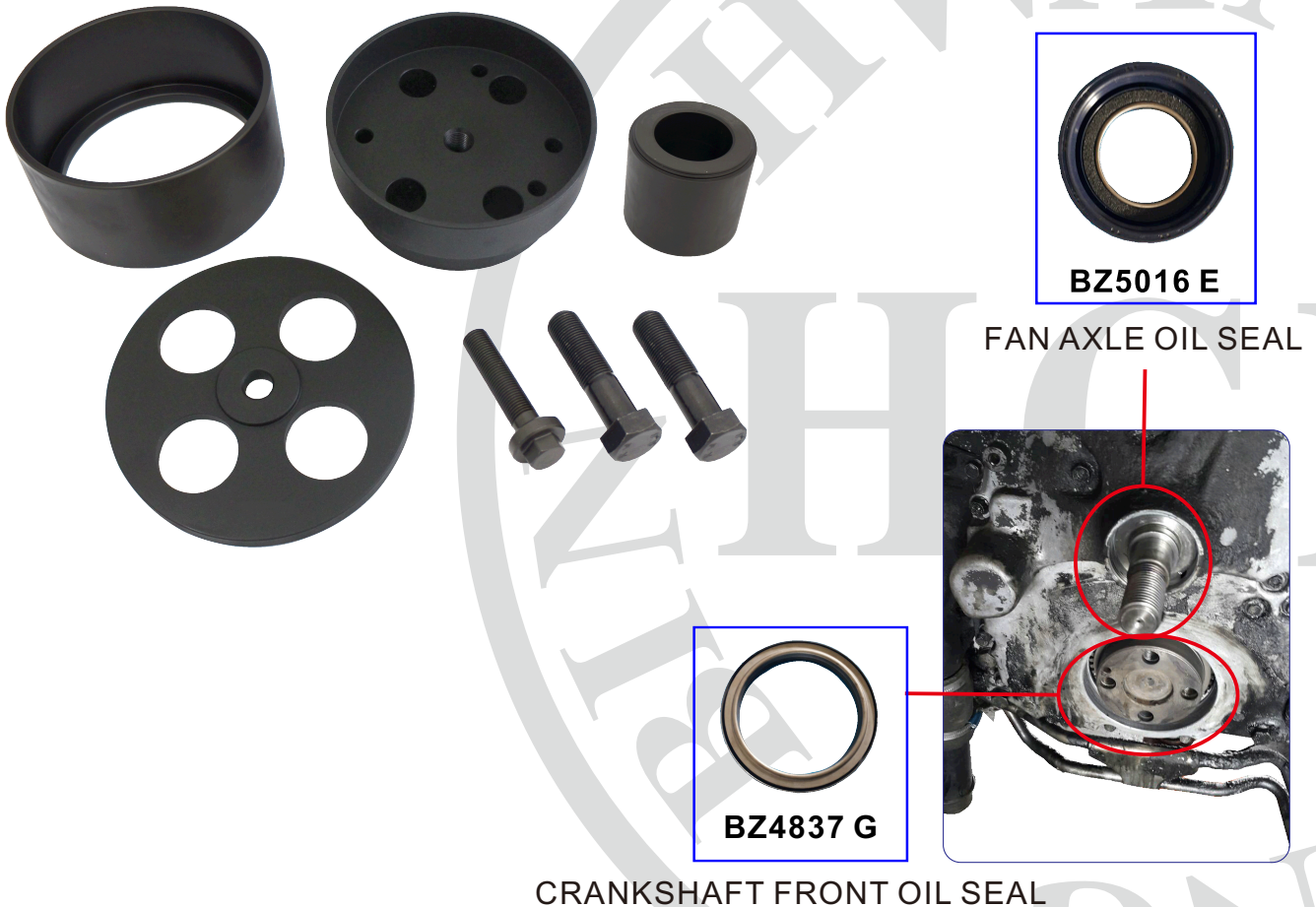


ET1635B

ISUZU 35 TONS (6WG1 / 6WA1) / 6WZ1 / 6WF1
CRANKSHAFT FRONT & REAR OIL SEAL / FAN AXLE OIL SEAL INSTALLER



Character:

- This tool is specially designed for prevent the oil seal from damaged when installing it.
- Oil seal genuine no.: BZ4837 G, BZ5016 E
- Application : ISUZU 35 tons truck (6WG1/6WA1), 6WZ1 (370P) front/ rear oil seal and 6WF1.



IMPORTANT:READ THESE INSTRUCTIONS CAREFULLY.

※Warning! Ensure Health and Safety,local authority and general work shop practice regulations are adhered to when using tools.

※DO NOT use tool if damaged.

※Maintain tool in good and clean condition for best and safest performance.

※WARNING! The warnings,caution and instructions referred to in this manual cannot cover all possible conditions and situations that may occur.It must be understand that common sense and caution are factors which cannot be built into this product

,but must be applied by the operator.



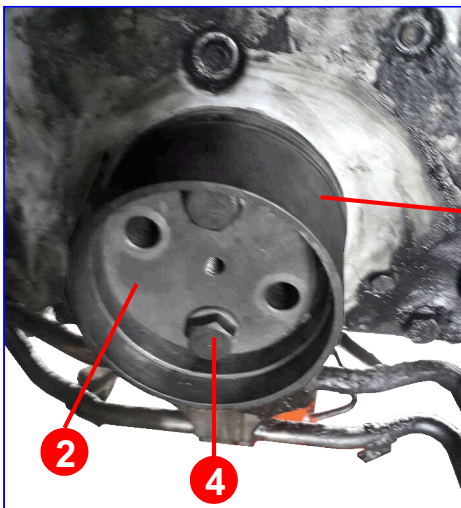
ET1635B

ISUZU 35 TONS (6WG1/6WA1) CRANKSHAFT FRONT
& REAR OIL SEAL/FAN AXLE OIL SEAL INSTALLER

Components:

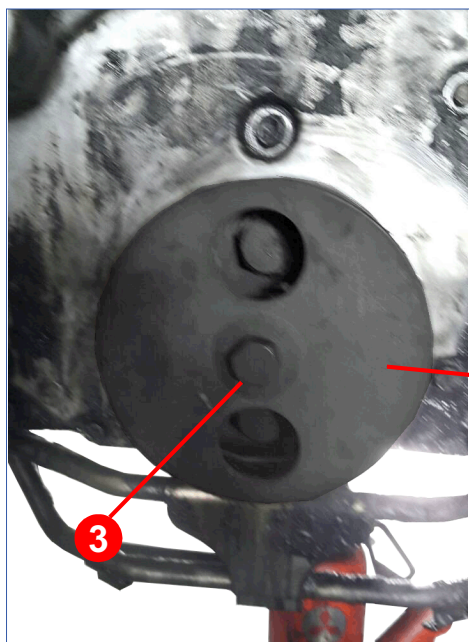
No.	Name	Description	Q'ty	Remark
1	Install guide base	D: ϕ 146.5mmx67.5L	1	d: ϕ 118.5
2	Install base	D: ϕ 136.5mm, d: ϕ 117.7x60.5L	1	M14xP1.5
3	Center screw	Hexagon H17	1	M14xP1.5
4	Fixing screw	Hexagon H27	2	M18xP1.5
5	Installing upper base	D: ϕ 154mmx14L	1	d: ϕ 14.5
6	Installing block	D: ϕ 66mmx59	1	d: ϕ 30.5

Installing crankshaft front oil seal:



Step 1:

1-1 Hitch no. 1 (Install guide base) to no. 2 (Install base).
1-2 Put new oil seal in the front of the tool, screw no. 4 (Fixing screw)



Step 2:

2-1 Cover no. 5 (Installing upper base), screw no. 3 (Center screw) to an appropriate place. Then finish installing.

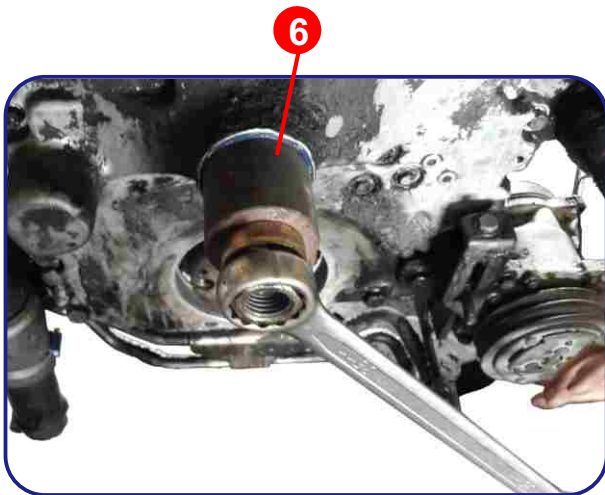
ET1635B

ISUZU 35 TONS (6WG1/6WA1) CRANKSHAFT FRONT
&REAR OIL SEAL/FAN AXLE OIL SEAL INSTALLER



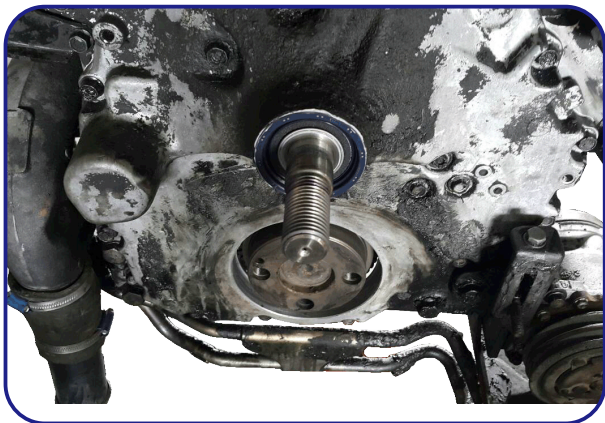
Finish installing!

Installing fan axle oil seal



Step 1:

1-1Hitch no.6(Install base) on the oil seal, then
screw the nut to a appropriate place.



Finish installing!