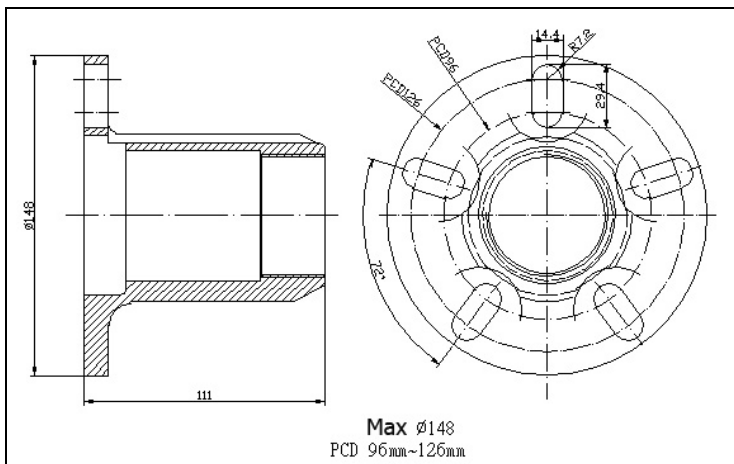




ET1095A-5H

EXPELLER BELL FOR HUB EXTRACTION (5 HOLES)



- Expeller for hub extraction with mechanical spindle includes 4 or 5 conical washers.
- P.C.D. range $\Phi 96-126\text{mm}$
- 4H: HONDA, ACCORD, TOYOTA, MITSUBISHI, most Japanese vehicles.
5H: Mercedes and BMW, most European vehicles.
- Material of Main Body: SCM 440
- Hardness: HRC 35° ~40°