

HEAVY DUTY MACPHERSON SPRING COMPRESSOR



1. FEATURES

2. SPECIFICATIONS

3. INSTRUCTIONS

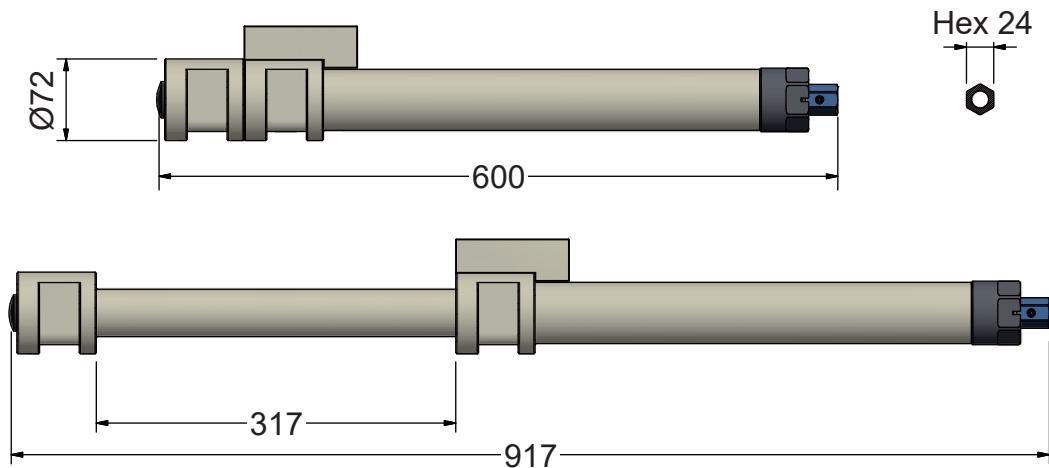
4. APPLICATIONS

1. FEATURES

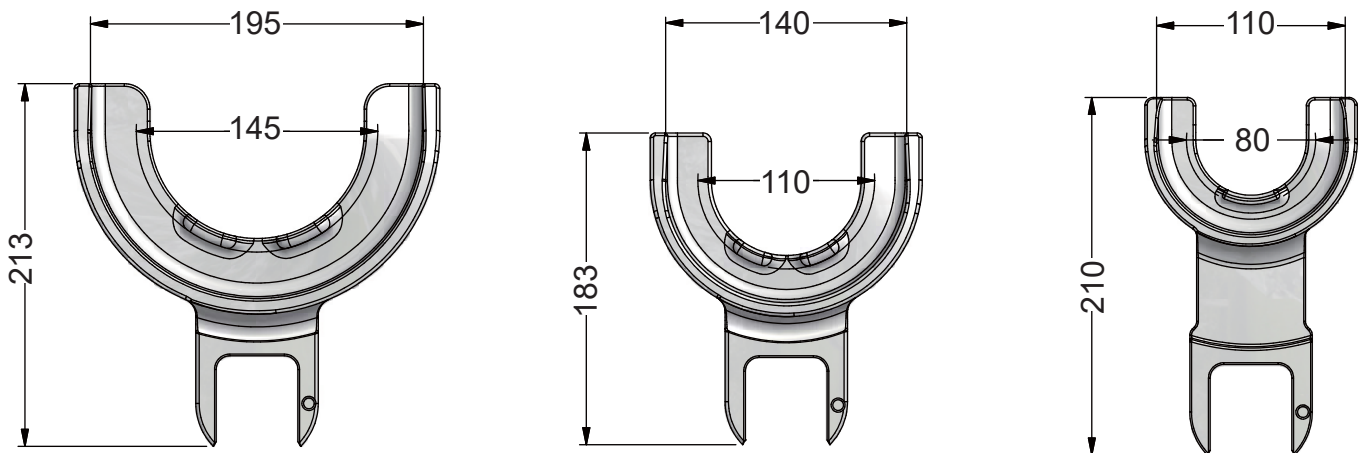
- Set for heavy duty MacPherson shock absorber springs
- Suitable for air/impact wrench operation
- Provided with Nylon 6-6 jaw covers to protect coil spring paint
- Provided with a rectangle block that can be attached to main body for being fixed on a vise
- Break point: 6,820 kgf (ca. 66,836 N)
- Max. load: 2,728 kgf (ca. 26,000 N)
- Provided with Product Liability Insurance

2. SPECIFICATIONS

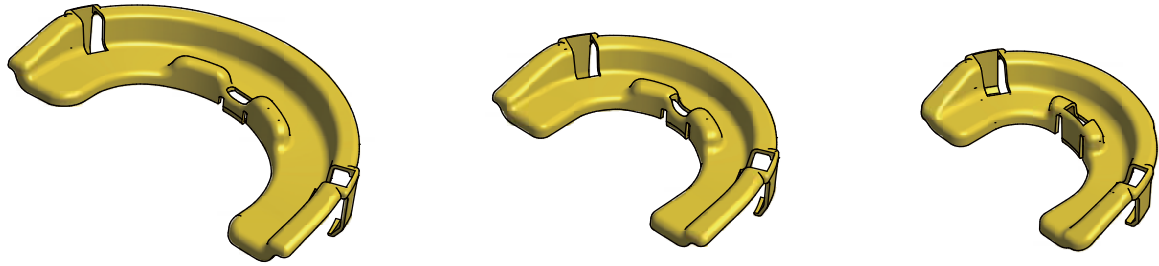
All figures listed below, unless otherwise stated, are in millimeter (mm)



Description	Tool main body
Weight	10.6 kg
Internal spindle material	SCM 415
Internal spindle hardness	HRC 43-47
Stroke	0-317 mm



Description	Large jaw pair	Medium jaw pair	Small jaw pair
Weight	5.6 kg	4.2 kg	4.2 kg
Material	SCM 440	SCM 440	SCM 440
Process	Forging	Forging	Forging
Hardness	HRC 41-45	HRC 41-45	HRC 41-45



Description	Large protection cover	Medium protection cover	Small protection cover
Weight	52.5 g	45 g	30 g
Material	Nylon 6-6	Nylon 6-6	Nylon 6-6
Quantity	2 pcs	2 pcs	2 pcs

3. INSTRUCTIONS



CAUTION



- Always read the instructions carefully before using the tool
- Ensure the working area has adequate lighting
- Keep children and unauthorized persons away from the working area
- Keep working area clean and tidy, dry and free from unrelated materials
- DO NOT allow untrained persons to use this tool kit
- Always wear eye protection that meets OSHA and ANSI Z87.1 standards
- Always wear gloves when working with the tool
- Always wear ear protection
- Disposal: Customers should follow local regulations to handle used/wasted parts

1 Fix the rectangle block on the tool main body on a vise (Fig. 1)

2 Choose a suitable sized jaw pair and connect the pair onto the tool main body.

3 Connect the nylon protection cover onto the jaws if necessary.

4 When installing the jaw on the tool body, pull the pin (Fig. 2), insert the jaw, and then release the pin, and the jaw and tool main body can be locked.

5 Make sure the jaw pair is securely locked onto the tool main body.

6 Connect a 24mm socket and an air/impact wrench to compress the shock absorber coil spring (Fig. 3).

Operate the air/impact with caution.



Fig.1



Fig.2

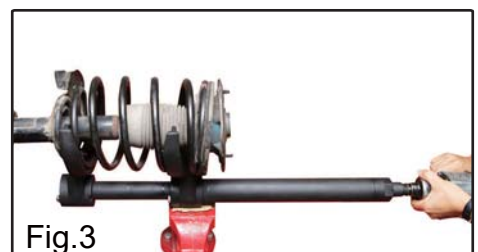
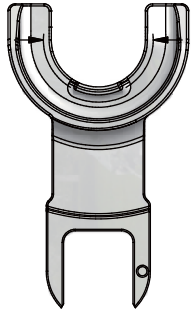


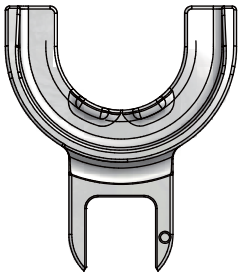
Fig.3

4. APPLICATIONS



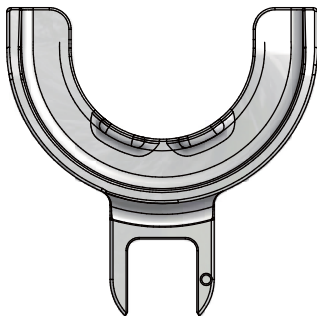
SMALL JAW

Audi, Alfa Romeo, BMW, Chrysler, Daihatsu, Ford, Fiat, Honda, Kia, Mazda, Mercedes-Benz A class, Mitsubishi, Nissan, Opel, Land Rover, Seat, Skoda, Subaru, Suzuki, Toyota, Volkswagen, Volvo, Vauxhall



MEDIUM JAW

Audi, Alfa Romeo, BMW, Chrysler, Citroen, Daihatsu, Ford, Fiat, Honda, Hyundai, Kia, Land Rover, Mazda, Mercedes-Benz A class, Mitsubishi, Nissan, Opel, Porsche, Peugeot, Renault, Saab, Seat, Skoda, Subaru, Suzuki, Toyota, Volkswagen, Volvo, Vauxhall



LARGE JAW

Audi, Alfa Romeo, BMW, Chrysler, Citroen, Ford, Fiat, Honda, Hyundai, Kia, Land Rover, Mazda, Mitsubishi, Nissan, Opel, Porsche, Peugeot, Renault, Saab, Seat, Subaru, Suzuki, Toyota, Volkswagen, Volvo, Vauxhall