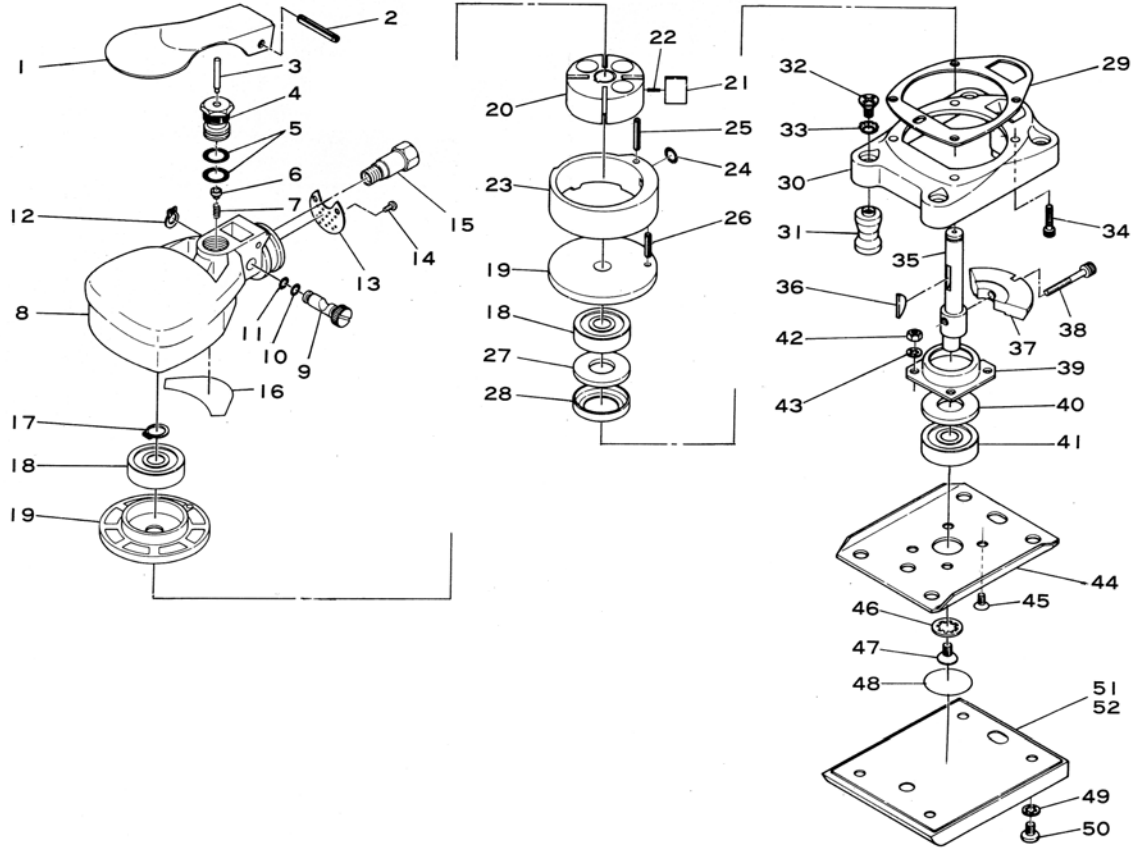


E3003

Mini Orbital Sander



Ref. No.	Parts No.	Description	Qty	Ref. No.	Parts No.	Description	Qty
1	490-8	Throttle Lever	1	27	570-1	Felt Ring	1
2	40-30	Roll Pin (4-30mm)	1	28	481-9	Seal Cover	1
3	455-11	Valve Pin	1	29	490-13	Motor Gasket	1
4	490-4	Valve Body	1	30	490-15B	Motor Retainer	1
5	S-10	O-Ring	2	31	490-48B	Rubber Support	4
6	455-21	Valve	1	32	E-M50-80	Screw	4
7	490-20	Valve Spring	1	33	CT-50	Washer	4
8	490-42	Motor Housing	1	34	Z-632-127	Cap Screw	4
9	485-4	Air Regulator	1	35	490-11	Crank Shaft	1
10	P-5	O-Ring	1	36	480-23	Key	1
11	P-4	O-Ring	1	37	490-16	Lower Weight	1
12	JS-8	Retaining Ring	1	38	Z-M40-250	Cap Screw	1
13	490-47	Deflector	1	39	490-18	Shoe Bearing Housing	1
14	JIM30-50	Screw	2	40	481-10	Spacer (Brass)	1
15	480-51	Adaptor	1	41	6200-LLU	Ball Bearing	1
16	490-54	Seal (Crescent)	1	42	N1-M40	Nut	4
17	JS-10	Retaining Ring	1	43	AT-40	Washer	4
18	6200-ZZ	Ball Bearing	2	44	490-19B	Shoe (Square)	1
19	490-53T	End Plate	2	45	E-M40-80	Screw	4
20	490-5	Rotor	1	46	AT-70	Washer	1
21	490-6	Rotor Blade	4	47	E-M50-100	Screw	1
22	490-1	Blade Spring	2	48	490-52	Seal (Round)	1
23	490B-36	Cylinder	1	49	AT-50	Washer	4
24	P-7	O-Ring	1	50	A-M50-60	Screw	4
25	25-10	Roll Pin (2.5-10mm)	1	51	P-3003	Leather Pad incl. Plate (490-58B)	1
26	25-6	Roll Pin (2.5-6mm)	1	52	M-3003	Velcro Pad incl. Plate (490-58B)	1